



**LIVINGSTON COUNTY
GENEALOGICAL SOCIETY**

77 EDGEMONT DR.

48855-9708

[HTTPS://MILCGS.WORDPRESS.COM](https://milcgs.wordpress.com)

MEMBERSHIP

Anyone interested in genealogy may become a member of the Livingston County Genealogical Society.

The Society is a member of the Michigan Genealogical Council and the Federation of Genealogical Societies.

- Meetings:
- Currently Being Held via Zoom
- Check Website or facebook for changes

For a list of meeting dates and speakers, please visit our website.

OBJECTIVES

- To encourage and assist in the study of family history.
- To promote the exchange of knowledge and to encourage the deposit of genealogical records.
- To preserve and make available for genealogical research the records of our ancestors.
- To cooperate with other societies.
- To publish materials of interest and of use to the genealogist.

QUERIES/PIONEER CERTIFICATES

The society will answer any queries of a local nature at no charge to members. Donations are welcome to help defray expenses. Address queries to the attention of the Queries Chairperson.

Pioneer Certificates are available for \$12.50 for the first copy and \$5.00 for each additional copy per request.

PUBLISHED MATERIALS

The society has many published items available for sale. For a copy of our current publication list and prices, please visit our website.



You can find us

on the web at <https://milcgs.wordpress.com/> and you can follow us on Facebook.

MEMBERSHIP FORM

NAME: _____

ADDRESS: _____

CITY: _____

STATE: _____

ZIP CODE: _____

MAIDEN NAME: _____

E-MAIL: _____

TELEPHONE: _____

SURNAMES OF INTEREST:

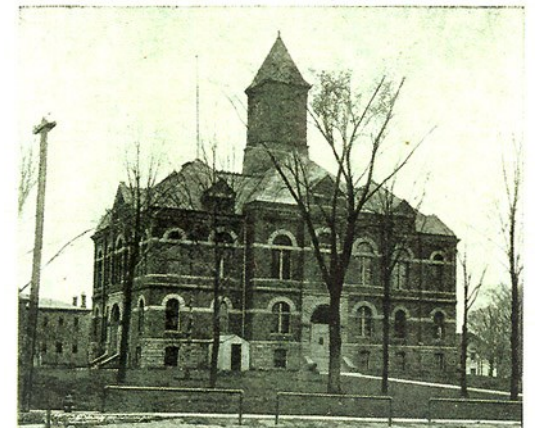
DUES:

**1 YEAR-ELECTRONIC NEWSLETTER \$20
1 YEARS-PRINTED/MAILED NEWSLETTE\$25**

2 YEAR-ELECTRONIC NEWSLETTER \$ 35

2 YEAR-PRINTED/MAILED NEWSLETTER \$45

**ANNUAL YEAR IS JUNE 1ST
THROUGH MAY 31ST.**



LIVINGSTON COUNTY COURT HOUSE, HOWELL, MICH.